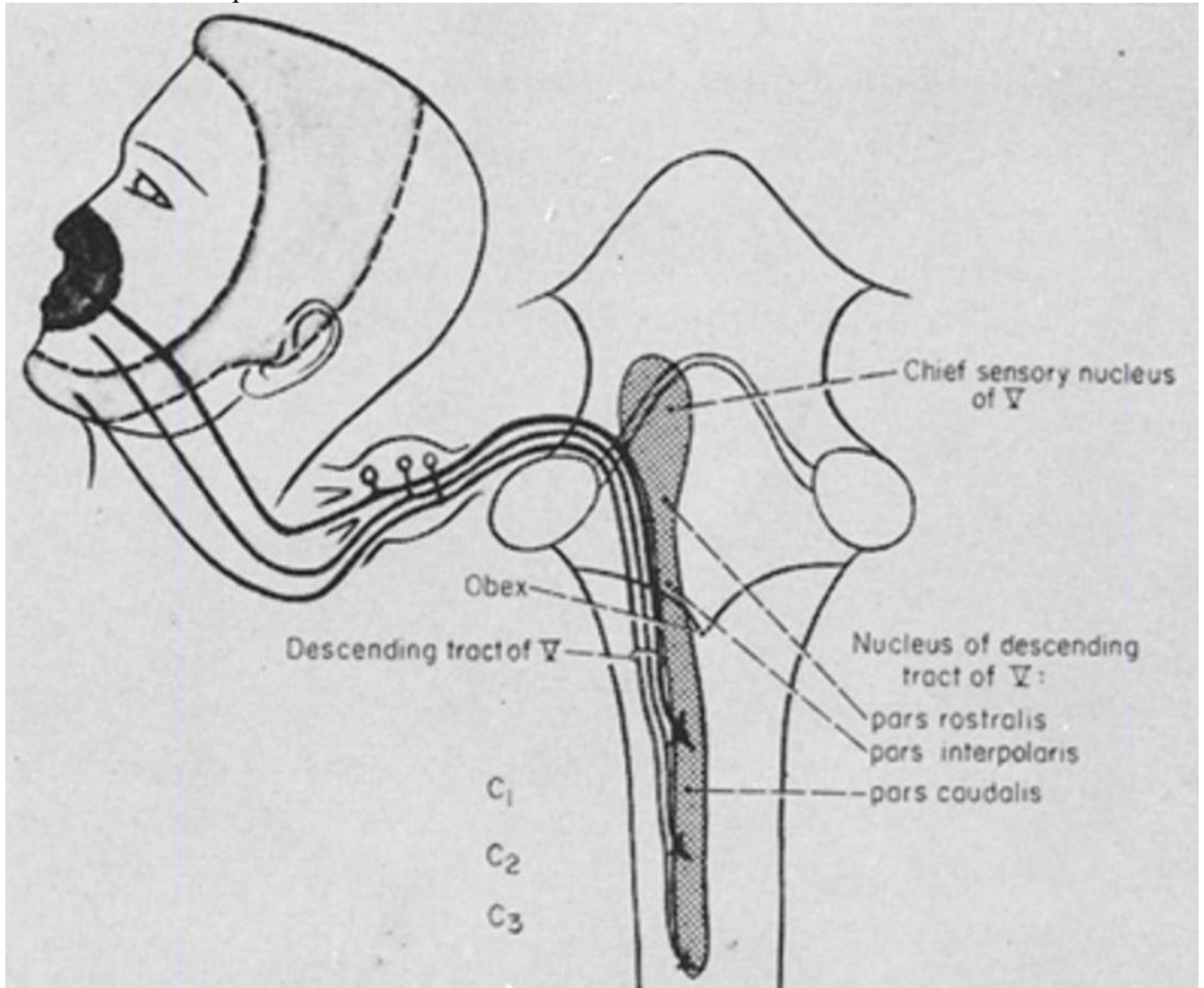


# Trigeminal Nerve

Last updated: December 22, 2020

## NUCLEI

“Onion skin” concept:

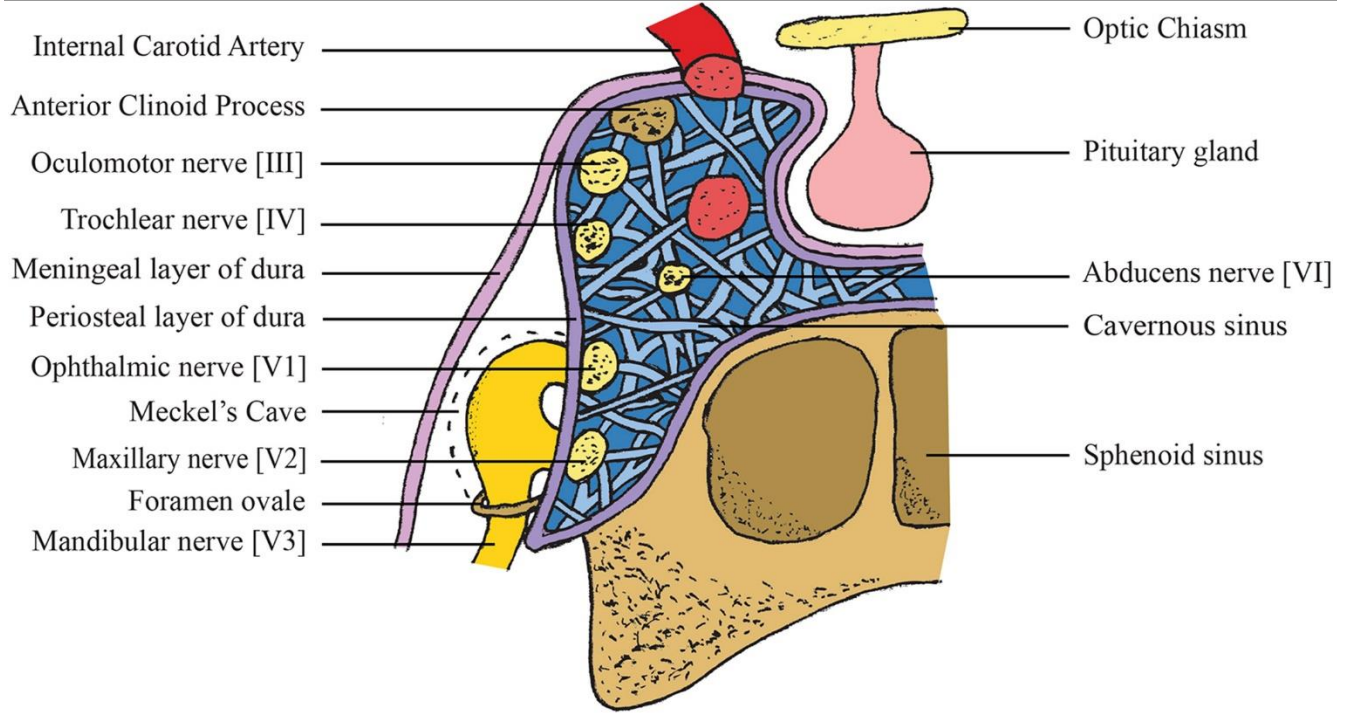


## INTRACRANIAL COURSE

### MECKEL'S CAVE

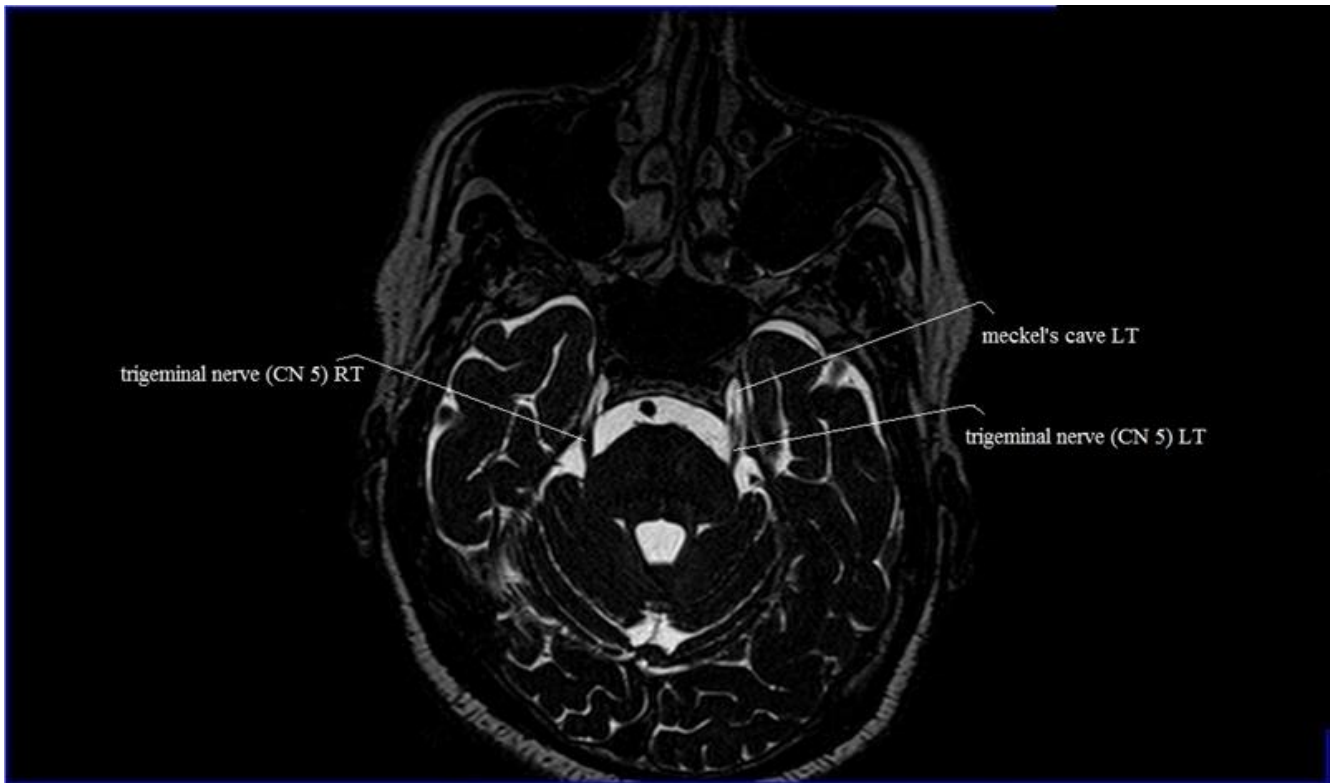
Meckel cave is situated at the posterolateral aspect of the cavernous sinus on either side of the sphenoid bone.

- medial to the ganglion in Meckel cave is the internal carotid artery in the posterior portion of the cavernous sinus.
- inferior is the motor root of the trigeminal nerve and the petrous apex with the internal carotid artery traversing the carotid canal.



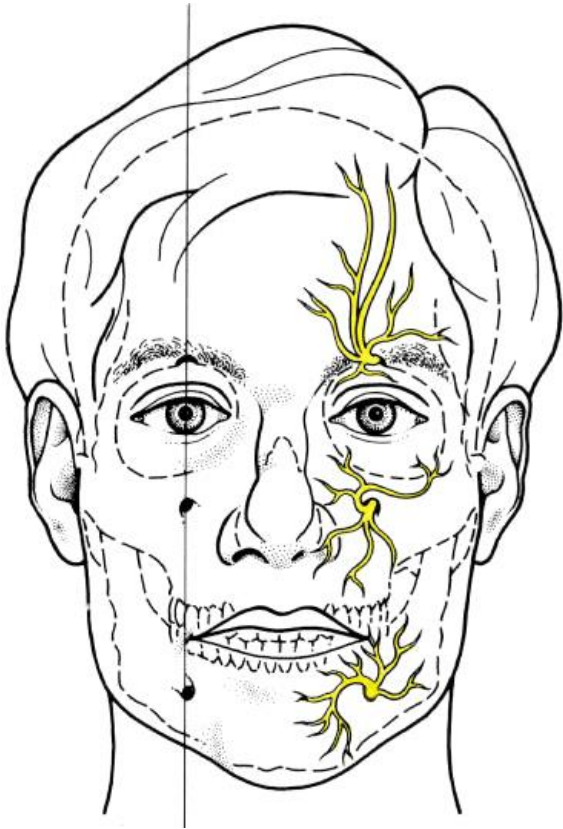
**MRI**

Annotated MRI of entire CN5 course:  
<https://radiopaedia.org/cases/trigeminal-nerve-normal?lang=us>



**SKULL FORAMINA**

Supraorbital, infraorbital, and mental branches of CN5 - bony foramina of these nerves lie roughly in straight line passing through pupil and lateral commissure of lips:



BIBLIOGRAPHY for ch. "Cranial Nerves" → follow this [LINK >>](#)